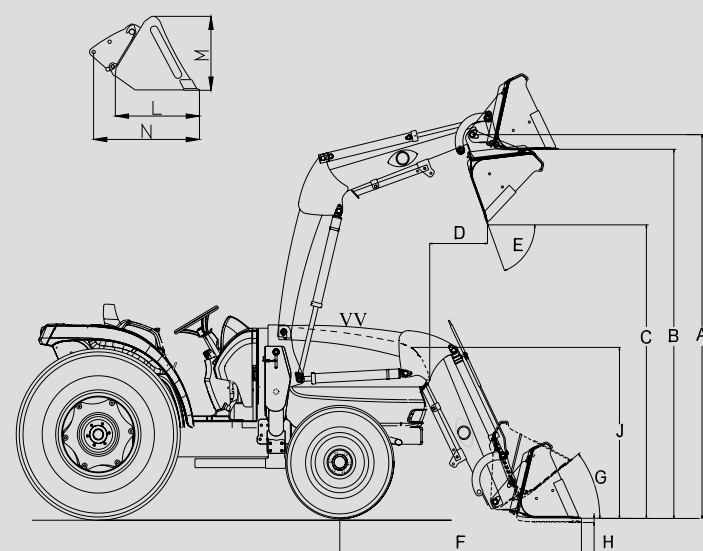


KIOTI CK3510 CK3510H CK4010 CK4010H



Front End Loader

The KIOTI KL4010 front end loader is specifically designed for the CK3510, CK3510H, CK4010, and CK4010H model tractors, providing efficient performance with single lever joystick control. The KIOTI loader, with a built in parking stand, is designed to be quickly and easily attached and detached. KL Series loaders utilize the tractor's hydraulic system, feature single-lever control with float and come with a bucket level indicator.



Loader Specifications

Model	KL4010
A. Maximum Lift Height	2,500mm (98.4")
B. Clearance with Attachment Level	2,234mm (91.9")
C. Clearance with Attachmenwwt Dumped	1,839mm (72.4")
D. Reach at Maximum Height	321mm (12.6")
E. Maximum Dump Angle	56 ° (45.2 °)
F. Reach with Attachment on Ground	1,660mm (65.4")
G. Attachment Rollback Angle	42 ° (41.8 °)
H. Digging Depth Below Grade	124mm (4.8")
J. Overall Height in Carry Position	1,345mm (52.9")
L. Depth of Attachment (to back of inner shell)	470mm (19.1")
M. Height of Attachment	560mm (19.2")
N. Depth of Attachment (to pivot pin)	660mm (26.2")
S. Lift Capacity to Full Height at Pivot Pins	764kgf (1,683 lb)
T. Breakout Force at Ground Level, Pivot Pins	1,469kgf (3,239 lb)
Lift Cylinder	Ø50x425STmm (Ø1.97x16.7ST")
Bucket Cylinder	Ø50x395STmm (Ø1.97x15.5ST")
Attachment used for specification	1,676/1,676mm (60 / 66")
Bucket Weight	100/112kg (220 / 246 lb)
Approx. Weight (without Bucket)	332kg (730 lb)
Bucket Capacity	0.2(0.27)/0.21(0.29)m ³ (7.1 (9.5) / 7.4 (10.2)t ³)

*Specifications and design are subject to change without notification.

Specifications

MODEL	CK3510	CK3510H	CK4010	CK4010H
ENGINE				
Model	3B183LWM-E1	3B183LWM-E1	3B183LWM-E1	3B183LWM-E1
Type	3cylinder, water-cooler 4cycle Diesel.			
Engine Gross HP(KW)	35.0hp(26.1kw)		38.0hp(28.3kw)	
PTO HP(KW)	30.8(23)	28(21)	33.5(25)	32(24)
Displacement	cc		1,826	
Rated Revolution	rpm		2,600	
Fuel Tank Capacity	ℓ		34	
DRIVE TRAIN				
Clutch	Dry Dual Stage	Dry Single Stage	Dry Dual Stage	Dry Single Stage
Transmission	Manual	HST	Manual	HST
Speeds	9X3	Infinite(3 ranges)	9X3	Infinite(3 ranges)
Differential Lock	Rear Standard			
Brake	Wet Multi Disc			
PTO	Live			
Rear PTO (standard)	rpm		540 / 750	
Mid PTO (option)	rpm		(2,000)	
HYDRAULIC SYSTEM				
Pump	Gear			
Pump Capacity (Implement)	lpm		44.4 (27.04)	
3-Point Hitch	Category I			
Lifting Capacity at Ball (at 24" behind)	kg		1,030(740)	
Hydraulic Lift Control System	Position			
No. of rear remote valve's ports	Opt. 4 ports		Std. 4 ports	
Steering	Hydrostatic Power Steering			
TIRE SIZE				
Front AG.(TURF, INDUSTRIAL)			7-16 (28X8.5-15, 27X8.5-15)	
Rear AG.(TURF, INDUSTRIAL)			11.2-24 (41X14-20, 15-19.5)	
TRAVELING SPEEDS				
Forward	kph	1.52 ~ 23.56	0 ~ 25.0	1.52 ~ 23.56
Reverse	kph	1.90 ~ 15.39	0 ~ 25.48	1.90 ~ 15.39
DIMENSIONS				
Overall Length (includes 3-pt hitch)	mm		3,010	
Overall Width (minimum tread)	mm		1,400	
Overall Height (ROPS)	mm		2,430	
Wheelbase	mm		1,670	
Min. Ground Clearance	mm		340	
Tread	Front (AG)	mm		1,132
	Rear (AG)	mm		1,302
Min. Turning Radius (with brake)	m		2.4	
Weight with AG. Tires	kg.f	1,215	1,240	1,215

*NOTE : Specifications and design are subject to change without notice.



Daedong Kioti Europe B.V
Stationsweg 36, 3214 VK Zuidland Netherlands
• Tel. 31-181-458851 • Fax. 31-181-452114
web www.daedong.co.kr



Standard Equipment

- Parking Brake
- Horn
- Head Lamp
- Signal Lamp
- File up PTO Cover
- Cup Holder
- Rear View Mirror
- 7 Pin Socket
- Front Hitch
- Fuel Tank Cap
- Floor Mat
- Single Lever Joystick(only for 40hp)
- Quick Type Lower Linkage (only for 40hp)
- HST Easy Speed (only for 40hp HST)

Optional Equipment

- MID PTO KIT
- Rear Working Light Kit
- HST Cruise Kit
- Beacon Wire Harness
- Sun Canopy
- Swing Drawbar Kit
- Toolbox Kit
- Cassette Type Lower Link Kit (only for 35hp)
- Front Weight Kit
- Rear Weight Kit
- Joystick Valve Kit(only for 35hp)
- Double Acting Vavle Kit(only for 35hp)
- Rear Remote Valve Kit(only for 35hp)
- HST Easy Speed (only for 35hp HST)
- Field Option Cabin

Attachments

- Front Loader
- Rotary Tiller

Dealer Imprint Area

LIT-CK10-ALL

Kioti Tractor / Daedong Ind. Co., Ltd. / EU_CK10_1007

NEW CK10 SERIES

KIOTI VALUABLE COMPACT TRACTOR



Experience the new and powerful CK10 Series

Illuminated Dashboard

The illuminated dashboard ensures great visibility while working in bright daylight or at night.



HST Easy Speed

HST Easy Speed lever is linked between RPM of engine and the HST pedal. Once it is engaged, driver no longer has to control RPM throttle to control the speed which allows to drive as easy as car.



Rear Differential Lock

The differential lock lever allows for easy engagement/disengagement of the differential allowing you to maintain traction on uneven or muddy terrain.



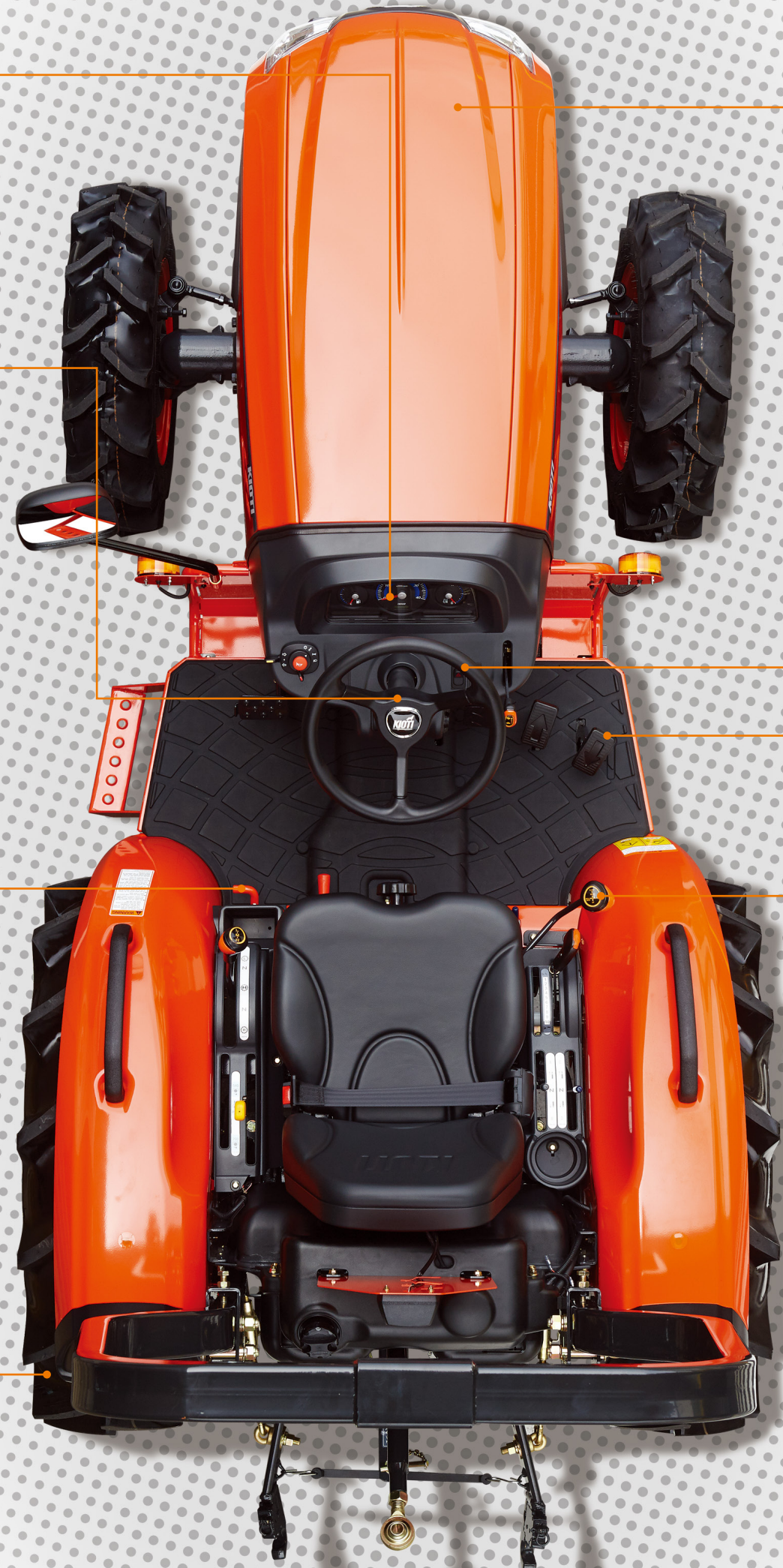
9x3 Manual Transmission

Manual transmission models feature 9 Forward and 3 Reverse speeds delivering heavy duty performance. Second and Reverse gears are synchronized for efficient forward and reverse operations requiring frequent shifting.



Tail Lamp & Flasher

The stylish tail lights improve operator safety by increasing visibility. When the lights are on, the fender mounted flasher alerts traffic to your presence when travelling on the road.



Center Marker

The center ridge marker on the hood assists with maintaining straight rows.



Power Steering

The standard power steering minimizes the effort required to make tight, repetitive turns.



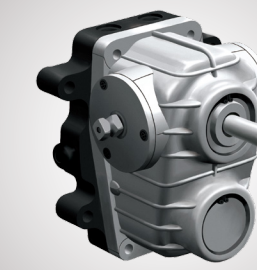
Dual HST Pedals

HST models employ a dual pedal system for forward and reverse with smooth engagement, acceleration and deceleration. Pedal pressure is minimized which reduces operator fatigue during long hours of use and when doing repetitive tasks.



Single Lever Joystick (Std. 40hp)

Front loader work is made easier by the use of a single lever joystick. The lever returns to neutral when released. A float position allows the bucket free flotation over the ground surface.



Powerful HST Transmission

HST models feature performance proven, heavy duty HST drives that deliver power and efficiency. The three range transmission (Hi/Mid/ Low) with dual pedal operation makes your job easier, smoother and safer.



Eco-Friendly Diesel Engine

The Daedong 3B183 engine, proven for its performance and durability, complies with all EEC Stage IIIA standards with low emission.



High Ground Clearance

The maximum ground clearance of 340mm makes usage on rocky or uneven terrain simpler.

NEW GENERATION KIOTI Value TRACTOR

