

D20x22 S3 NAVIGATOR®

HORIZONTAL DIRECTIONAL DRILL



RIGHT POWER, RIGHT FOOTPRINT.

The D20x22 S3 offers a sizeable increase in power and rotational torque over its predecessor, the D16x20 Series II, making it well-suited to install cable, fiber and product pipe efficiently and productively.



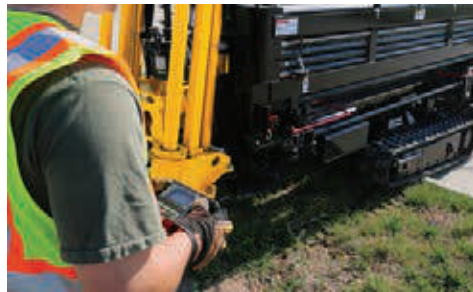
COMMON CONTROLS. The D20x22 S3 features the new common control platform from Vermeer, which assists in operator efficiency and training.



NARROW WHEN YOU NEED IT. The D20x22 S3 features a shorter, narrower design and is lighter-weight than comparative competitive models, which allows for it to sit comfortably on a trailer when paired with a mix system.



TOP OF ITS CLASS. With class-leading rotational and carriage speeds, the D20x22 S3 helps contractors install more linear feet faster, maximizing jobsite productivity.



GET TO YOUR NEXT JOB FASTER.

The D20x22 S3 features a 34 percent increase in tracking speed and a 30 percent increase in tractive effort as compared to its predecessor, the D16x20 Series II, helping operators move up curbs and slopes faster to work more efficiently.



SERVICEABILITY. The drill's flip-up metal hood offers ease of access when performing routine service and maintenance.



VERMEER.COM



EQUIPPED TO
DO MORE.®

D20x22 S3 NAVIGATOR® HORIZONTAL DIRECTIONAL DRILL

GENERAL WEIGHTS AND DIMENSIONS

Min transport length: 17' (5.2 m)

Min transport width: 48" (121.9 cm)

Min transport height: 78" (198.1 cm)

Weight (drill option one): 10,850 lb (4921.5 kg)

Weight (drill option two): 11,160 lb (5062.1 kg)

ENGINE OPTION ONE

Make/Model: Deutz TD2.9

Fuel type: Ultra-low sulfur diesel

Max engine rpm: 2600 rpm

Gross horsepower: 74 hp (55 kW)

Max torque: 192 ft-lb (260.3 Nm)

Displacement: 177 cu in (2.9 L)

Cooling method: Liquid

Aspiration: Turbocharged

Emissions rating: Tier 4 Final (Stage IIIB)

ENGINE OPTION TWO

Make/Model: Deutz TD2.9

Fuel type: Low sulfur diesel

Max engine rpm: 2600 rpm

Gross horsepower: 74 hp (55 kW)

Max torque: 192 ft-lb (260.3 Nm)

Displacement: 177 cu in (2.9 L)

Cooling method: Liquid

Aspiration: Turbocharged

Emissions rating: Tier 4i (EU Stage IIIA)

OPERATIONAL

Thrust/Pullback: 19,550 lb (87 kN)

Max carriage speed at max engine rpm: 167 fpm (50.9 m/min)

Max spindle torque (low at max engine rpm): 2250 ft-lb (3050.6 Nm)

Max spindle speed at max engine rpm: 257 rpm

Min bore diameter: 3" (7.6 cm)

Max ground drive speed at max engine rpm (fwd): 3.3 mph (5.3 km/h)

Noise level at operator's ear: 85.9 d(B)a

Drill rack angle: 12°-17° (21%-30.6%)

FLUID CAPACITIES

Fuel tank: 25 gal (94.6 L)

Hydraulic tank: 30 gal (113.6 L)

Hydraulic system: 40 gal (151.4 L)

DRILLING FLUID SYSTEM

Max flow: 25 gpm (94.6 L/min)

Max pressure: 1000 psi (6.9 MPa)

FEATURES

Breakout system: Standard hydraulic vise

Drilling lights: Optional

Flow indicator: Standard

Stakedown system: Standard

Strike alert: Standard

Remote lockout: Standard

DRILL PIPE OPTION ONE

Type: Firestick® drill rod

Length: 10' (3 m)

Rod diameter: 1.9" (4.8 cm)

Weight: 55 lb (24.9 kg)

Bend radius: 98.7' (30.1 m)

DRILL PIPE OPTION TWO

Type: Firestick drill rod

Length: 10' (3 m)

Rod diameter: 2.06" (5.2 cm)

Weight: 66 lb (29.9 kg)

Bend radius: 101.9' (31.1 m)