

**Vermeer**<sup>®</sup>  
Brush Chipper

**BC1800XL**



## **Speed and large capacity equal high productivity.**

When the jobsite calls for large-diameter chipping, look to the Vermeer BC1800XL brush chipper. Built with strength for demanding conditions, the BC1800XL possesses the power and features needed for land-clearing and tree-care operations.

To better serve the diverse application needs of contractors and municipalities, the BC1800XL is available with four Tier 3 diesel engine options – 115 hp (85.8 kW), 125 hp (93.2 kW), 140 hp (104.4 kW), and 170 hp (127.8 kW). A 20" x 24" (50.8 cm x 61 cm) infeed opening is equipped with vertical feed rollers with helical cleats to help hold material down against the feed table for reduced vibration and shock loading to the rear of the machine.

The BC1800XL also features the patented SmartFeed control system which monitors engine rpm and automatically stops or reverses the feed rollers when feeding large, hardwood material. With three SmartFeed settings to fit the project's specific needs, this advanced system can increase productivity while reducing strain on vital engine parts.



### **Help improve chipping productivity.**

The SmartFeed system monitors engine rpm and automatically stops and / or reverses the feed rollers to enhance production. This system also senses feed-roller jams and manipulates the material automatically to reduce the need for manual-control bar use.



**The 3-year / 3,000-hour extended limited warranty** on drum housings, cutter drums, shaft, and ring feeder hubs offers you peace of mind, in addition to the 1-year / 1,000-hour Vermeer equipment limited warranty.



### **Easily lift heavy material.**

An optional winch allows operators to move large logs effortlessly. The 150' (45.7 m) winch line can handle logs up to 2000 lb (907.2 kg) and can automatically lift the log onto the feed table.



### **Smooth feeding.**

Vertical feed rollers with helical cleats help hold material firmly to the infeed table, which reduces vibration, shock, and structural loading to the rear of the machine.



# Brush Chipper



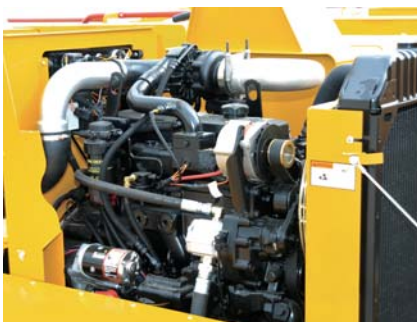
## Operator safety.

Combined with the patented Bottom Feed Stop Bar is a four-position upper-feed control bar with dual stop and forward / reverse feed positions. Mounted over the feed table, this control enables the operator to stop the feed rollers and select forward or reverse operations. Dual reset / hold-to-run buttons allow the operator to readily reset both bars.



## Engine options to fit your needs.

With four engine options providing 115 hp (85.8 kW), 125 hp (93.2 kW), 140 hp (104.4 kW), or 170 hp (127.8 kW), contractors have the ability to choose an appropriate horsepower option based on their jobsite needs.



## BC1800XL Specifications

### General

- Length: 14.8' (4.5 m)
- Height: 10.3' (3.1 m)
- Width: 79.9" (203 cm)
- Weight (without winch and hydraulic jack): 8740 lb (3964.4 kg)
- Weight (with winch and hydraulic jack): 9270 lb (4204.8 kg)

### Engine Options

- Make and model: John Deere PE4045THF285 Tier 3
- Horsepower: 115 hp (85.8 kW) @ 2400 rpm
- Max torque: 317 ft-lb (429.8 Nm) @ 1500 rpm
- Fuel type: Diesel
- Number of cylinders: 4
- Cooling medium: Liquid

- Make and model: John Deere PE4045THF285 Tier 3
- Horsepower: 125 hp (93.2 kW) @ 2400 rpm
- Max torque: 355 ft-lb (481.3 Nm) @ 1500 rpm
- Fuel type: Diesel
- Number of cylinders: 4
- Cooling medium: Liquid

- Make and model: John Deere PE4045THF285 Tier 3
- Horsepower: 140 hp (104.4 kW) @ 2400 rpm
- Max torque: 367 ft-lb (497.6 Nm) @ 1500 rpm
- Fuel type: Diesel
- Number of cylinders: 4
- Cooling medium: Liquid

- Make and model: Cummins QSB4.5 Tier 3
- Horsepower: 170 hp (127.8 kW) @ 2400 rpm
- Max torque: 460 ft-lb (623.7 Nm) @ 1500 rpm
- Fuel type: Diesel
- Number of cylinders: 4
- Cooling medium: Liquid

### Electrical

- System voltage: 12 Volt DC, 65 Amp alternator
- Lights: Front, rear, side, brake and tail markers / lights

### Capacities

- Fuel tank: 35 gal (132.5 L)
- Hydraulic tank: 12 gal (45.4 L)

### Chassis

- Frame: C channel, C6"x 8.2 lb (3.7 kg)
- Tires: 235 / 75R17.5 Load Range J
- Axle / suspension: 10000 lb (4535 kg) Dexter rubber torsion
- Hitch: Pintle 2.375" (6 cm) diameter

### Cutting System

- Disc / drum speed: 1100 rpm
- Drum size: 36" (91.1 cm) diameter
- Drum thickness: .375" (1 cm)
- Knives: 4 knives - 5.5" x 10" x .625" (14 x 25.4 x 1.6 cm)
- Bedknife: 4 sided - 3" x 20.25" x 1.25" (7.6 x 51.4 x 3.2 cm)
- Clutch: 13" (33 cm) spring-loaded auto clutch

### Feed System

- Chipping capacity: 19" (48.3 cm)
- Infeed opening height: 24" (61 cm)
- Infeed opening width: 20" (50.8 cm)
- Feed table length: 62.5" (158.8 cm)
- Feed table height: 30.5" (77.5 cm)
- Feed roller style: Twin vertical, helical cleats
- Feed speed: 118 fpm (36 m / min)

### Discharge System

- Discharge height: 110" (279.4 cm)
- Degree of rotation: 270 deg

# The Vermeer dealer network: Reliable support, all over the world.



*With nearly 200 locations across the globe - you're never far from an independent, authorized Vermeer dealer. Our dealers are in place to support your success with product expertise that's second to none.*



*When you need service, you can count on your local Vermeer dealer. With multiple locations, remote service trucks, and factory-offered technician training, your local Vermeer dealer offers reliable service that keeps your equipment running.*



*Vermeer parts are designed and manufactured to original specifications, so whether they're new parts or replacement parts, they'll live up to the Vermeer name.*



**Vermeer EMEA**  
(Europe, Middle East, Africa and CIS)  
P.O. Box 323  
4460 AS Goes  
the Netherlands  
Phone: +31 113 272700  
Fax: +31 113 272727

**Vermeer Corporation**  
1210 Vermeer Road East  
P.O. Box 200  
Pella, Iowa 50219 U.S.A.  
Phone: (641) 628-3141  
Fax: (641) 621-7773  
International fax: +1 (641) 621-7730  
www.vermeer.com

**Vermeer Asia Pacific**  
48 Toh Guan Road East  
#01-105 Enterprise Hub  
Singapore 608586  
Phone: +65 6516 9560  
Fax: +65 6515 9218

**Call toll-free 1-888-VERMEER**  
1-888-837-6337 (USA only)

## Building Industry Alliances to Serve You Better.

*Vermeer has forged strong strategic alliances with tree-industry giants that include Sherrill Incorporated and ArborMaster Training. These alliances ensure that top-quality industry support is the standard at Vermeer dealerships. Membership with the NAA and ISA helps Vermeer stay in touch with the customers it serves and the issues they face.*



Equipment shown is for illustrative purposes only and may display optional accessories or components. Please contact your local Vermeer dealer for more information about machine specifications.

Vermeer Corporation reserves the right to make changes in engineering, design and specifications; add improvements; or discontinue manufacturing at any time without notice or obligation.

Vermeer and the Vermeer logo are trademarks of Vermeer Manufacturing Company in the U.S. and / or other countries.

John Deere is a trademark of Deere & Co. Cummins is a trademark of Cummins Engine Company, Inc. Sherrill is a trademark of Sherrill Incorporated. ArborMaster Training is a trademark of ArborMaster.

© 2009 Vermeer Corporation. All Rights Reserved.